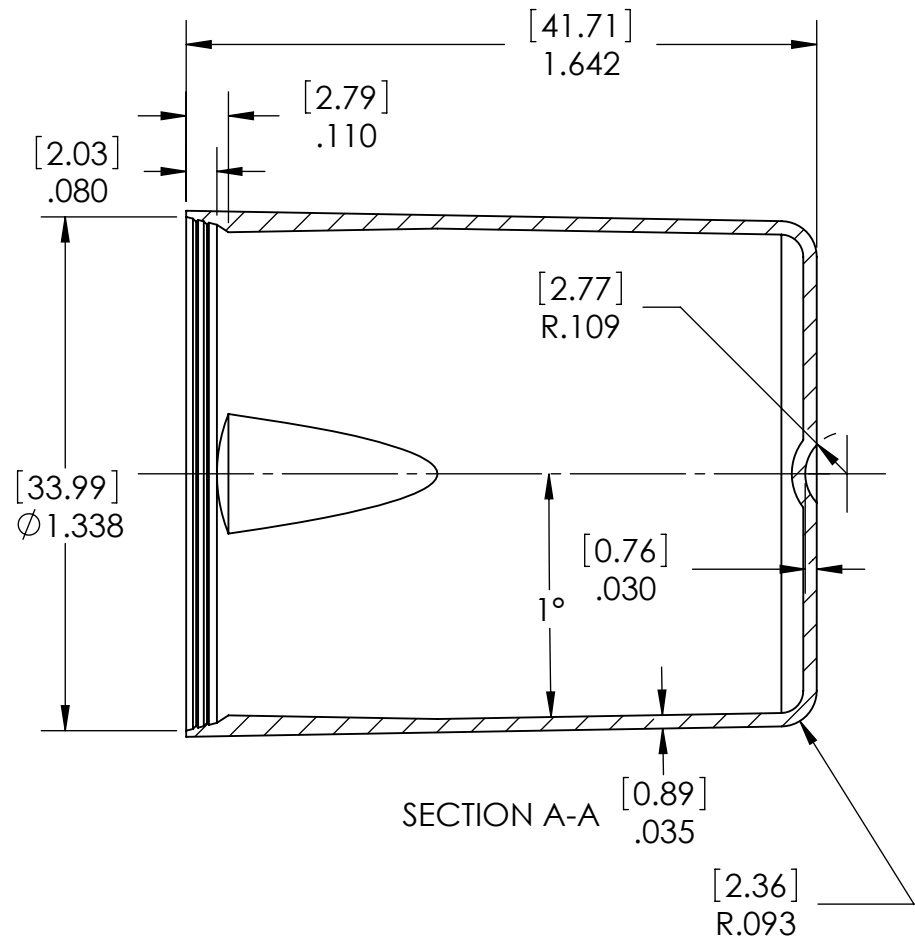
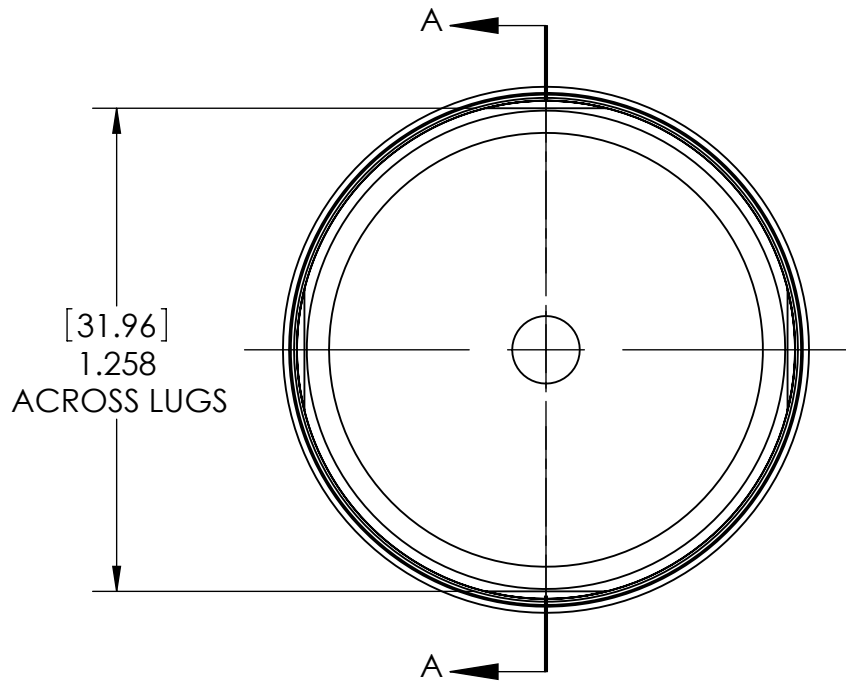


| COLOR         | PART NO.   |
|---------------|------------|
| CLEAR         | 3001290152 |
| WHITE         | 3001290154 |
| RED           | 3001290155 |
| BLACK         | 3001290157 |
| WHITE (STIFF) | 3001290158 |



**PROPRIETARY AND CONFIDENTIAL**  
 THE INFORMATION CONTAINED IN THIS  
 DRAWING IS THE SOLE PROPERTY OF  
 CLAYTON CORPORATION. ANY  
 REPRODUCTION IN PART OR AS A WHOLE  
 WITHOUT THE WRITTEN PERMISSION OF  
 CLAYTON CORPORATION IS PROHIBITED.



866 HORAN DR.,  
 FENTON, MO 63026  
 636-349-5333

|                               |      |         |              |                |              |
|-------------------------------|------|---------|--------------|----------------|--------------|
|                               | NAME | DATE    | TITLE:       |                |              |
| DRAWN BY:                     | DGS  | 2/19/09 | SW 158 Cover |                |              |
| CHECKED BY:                   |      | 7/14/10 |              |                |              |
| Tolerances:                   |      |         | SIZE         | PART #         | REV G        |
| DECIMAL INCHES: 0.0 +/- .015" |      |         | A            | 300129015X     |              |
| 0.00 +/- .010"                |      |         |              | MATERIAL:      |              |
| 0.000 +/- .005"               |      |         |              | Olefin Polymer | SCALE: 2:1   |
| ANGULAR: +/- .10 DEG.         |      |         |              |                | SHEET 1 OF 2 |



866 Horan Drive  
Fenton, MO 63026 USA  
1-800-729-8220  
1-636-349-5333  
www.claytoncorp.com

## SPECIFICATION SHEET SW 158 Cover

Cover Part Number: 300129015X

### Cover Information:

| Parameter  | Information                      |
|------------|----------------------------------|
| Food Grade | Yes                              |
| Weight†    | English: 0.13 oz.; Metric: 3.6 g |
| Material   | Olefin Polymer                   |
| Appearance | Variable                         |

### Carton Information:

| Item     | English                           | Metric                            |
|----------|-----------------------------------|-----------------------------------|
| Quantity | 1,800                             | 1,800                             |
| Size     | L: 23 in. x W: 15 in. x H: 18 in. | L: 58.4cm x W: 38.1cm x H: 45.7cm |
| Weight†  | 16.8 lbs.                         | 7.6 kg                            |

### Pallet Information:

| Item     | USA                               | International                        |
|----------|-----------------------------------|--------------------------------------|
| Style    | USA                               | USA                                  |
| Quantity | 36,000                            | 18,000                               |
| Size     | L: 40 in. x W: 48 in. x H: 78 in. | L: 101.6cm x W: 121.9cm x H: 106.7cm |
| Weight†  | 376 lbs.                          | 94 kg                                |

### Warehouse Storage Information:

| Condition   | English            | Metric             |
|-------------|--------------------|--------------------|
| Location    | Dry Protected Area | Dry Protected Area |
| Temperature | 40°F — 100°F       | 4.4°C — 37.8°C     |
| Time        | Up to 5 years      | Up to 5 years      |

† Weights are approximates

Approved By: \_\_\_\_\_

*Brennan Fogarty*

Date: 10/5/2021